

APPLICANT

MAXIMUS OPERATING, LTD.

Bear Creek Field

BIENVILLE PARISH, LOUISIANA

Docket No. 18-323

Proposed Unit

Davis "B" Sand, Reservoir A, SUA

June 26, 2018

Witness: Bryan S. Groves

prepared by

BRYAN GROVES

OIL & GAS GEOLOGIST

UNITIZATION / 3-D INTERPRETATION

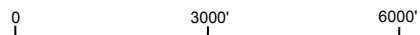
www.bryangrovesgeology.com

MAXIMUS OPERATING, LTD.

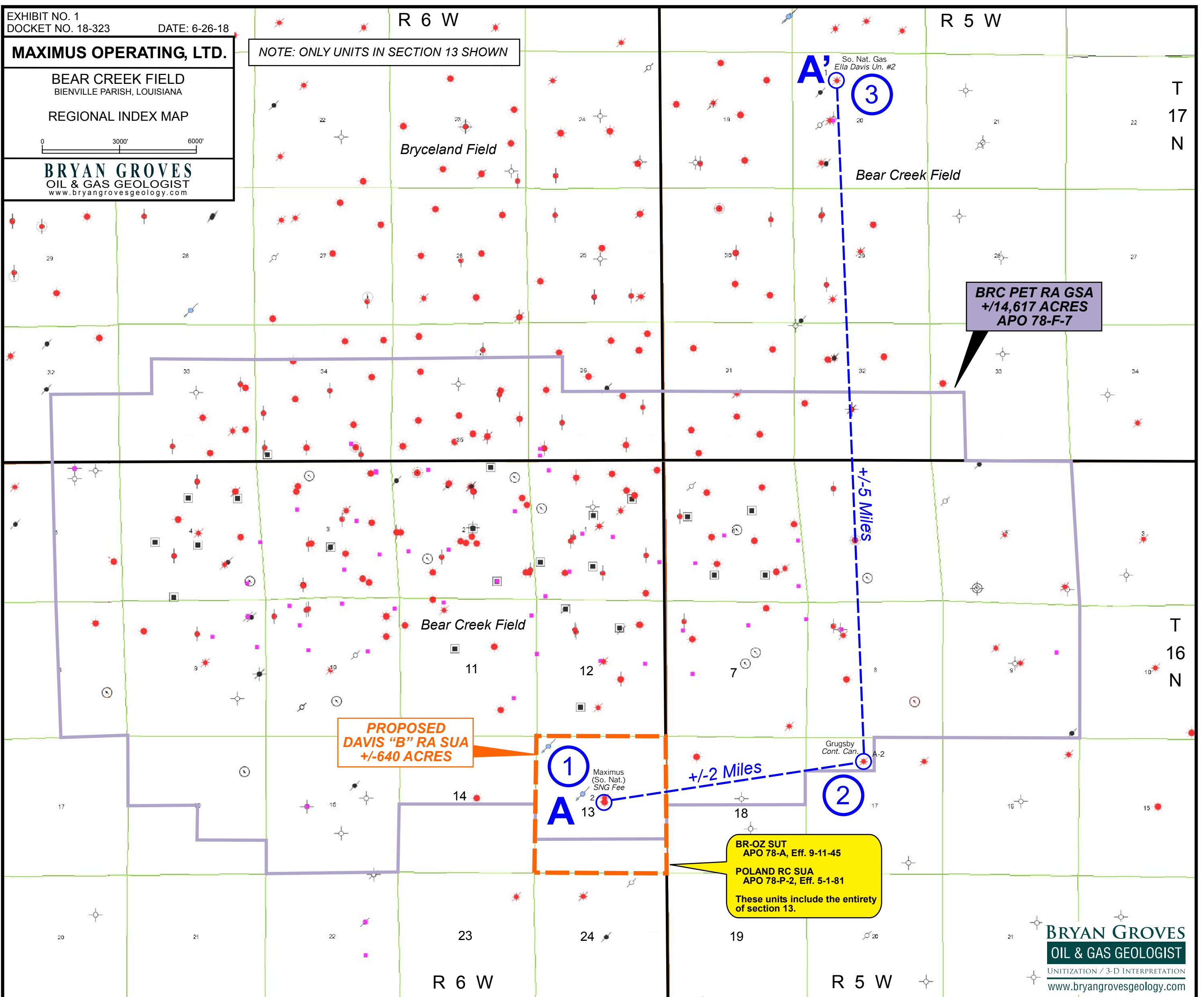
NOTE: ONLY UNITS IN SECTION 13 SHOWN

BEAR CREEK FIELD
BIENVILLE PARISH, LOUISIANA

REGIONAL INDEX MAP



BRYAN GROVES
OIL & GAS GEOLOGIST
www.bryangrovesgeology.com



BRC PET RA GSA
+14,617 ACRES
APO 78-F-7

PROPOSED
DAVIS "B" RA SUA
+/-640 ACRES

1
A
Maximus
(So. Nat.)
SNG Fee

+/-2 Miles

2

+/-5 Miles

BR-OZ SUT
APO 78-A, Eff. 9-11-45
POLAND RC SUA
APO 78-P-2, Eff. 5-1-81
These units include the entirety
of section 13.

A

1

MAXIMUS OPERATING, LTD.
(WILDHORSE)(SONAT)(EL PASO)
Poland RC SUA; SNG Fee #2
Sec. 13, T16N, R6W
Serial No. 168780

2

JACK W. GRIGSBY, ET AL
CONTINENTAL CAN CO. #A-2
Sec. 17, T16N, R5W
Serial No. 95537

3

SOUTHERN NATURAL GAS
ELLA DAVIS UNIT #2 #1
Sec. 20, T17N, R5W
Serial No. 87919

A'

+/-2 Miles

+/-5 Miles

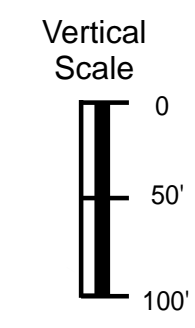


EXHIBIT NO. 2
DOCKET NO. 18-323 DATE: 6-26-18

MAXIMUS OPERATING, LTD.

BEAR CREEK FIELD
BIENVILLE PARISH, LOUISIANA

**CORRELATION SECTION
A-A'**

BRYAN GROVES
OIL & GAS GEOLOGIST
www.bryangrovesgeology.com

STATE OF LOUISIANA
DEPARTMENT OF CONSERVATION

WELL COMPLETION OR RECOMPLETION REPORT

29-E COMPLIANCE
 YES NO
 29-E UNIT ATTACHED
 YES NO

 D.O.C. USE ONLY

DISTRICT Shreveport

CODE NUMBERS:
07
1320
5630

DATE August 5, 1980

1. ON-SHORE
 2. INTERMEDIATE
 3. OFF-SHORE
 SEC. 13 T 16 N R 6W

PARISH Bienville

FIELD Bear Creek

DOC ORDER NO. _____

OPERATOR Southern Natural Gas Company

WELL NAME Southern Natural Gas Fee NO. 2 SERIAL NO. 168780

RESERVOIR D-3 Sand (Davis "B" Sand) 7/10/80 6:00
 COMPLETION DATE TIME AM PM

IMPORTANT: IS A FORM MD-10-R-A BEING FILED WITH THIS REPORT? IF NO, EXPLAIN YES NO

REMARKS: Filed Previously

COMPLETION DATA:

* TYPE COMPLETION	PRIMARY PRODUCT	PRIMARY PRODUCT CHANGE?	PRODUCING METHOD
<input checked="" type="checkbox"/> 1 - ORIG. COMP. <input type="checkbox"/> 2 - RE-COMP.	<input checked="" type="checkbox"/> 1 - OIL <input type="checkbox"/> 2 - GAS <input type="checkbox"/> 3 - DRY GAS	<input checked="" type="checkbox"/> 1 - YES <input type="checkbox"/> 2 - NO	<input checked="" type="checkbox"/> 1 - FLOWING <input type="checkbox"/> 2 - GAS LIFT <input type="checkbox"/> 3 - PUMPING <input type="checkbox"/> 4 - SHUT IN

* IF THIS IS A RE-COMPLETION SPECIFY: SAME RESERVOIR DIFFERENT RESERVOIR

0 BOPD INITIAL PROD. 220 MCF/DAY GAS VOLUME 700 PSIG FLOWING TUBING PRESSURE 1800 PSIG SHUT-IN TUBING PRESSURE 0 PSIG CASING PRESSURE

10 /64" 1 - POSITIVE
 2 - ADJUST CHOKE SIZE 150 BWPD % BS & W _____ GOR CF/BBL No Fluid GRAVITY API AT 60°F

PERFORATIONS 8266-8277 (Davis "B" Sand) PBUD 9140 TOTAL DEPTH 9200

CLEARANCE & CERTIFICATION:

ADDITIONAL CLEARANCE IS REQUESTED FOR _____ BBLs. OF OIL PRODUCED ON DRILL-STEM OR OTHER PRODUCTION TEST: (SEE SECTION X PARAGRAPH B OF ORDER 29-B ON REVERSE SIDE).

CERTIFICATION

I HEREBY CERTIFY THAT THE ABOVE INFORMATION IS TRUE AND CORRECT TO THE BEST OF MY KNOWLEDGE.

EXHIBIT NO. 3
DOCKET NO. 18-323 DATE: 6-26-18

MAXIMUS OPERATING, LTD.

BEAR CREEK FIELD
BIENVILLE PARISH, LOUISIANA

PROOF OF PRODUCTIVITY

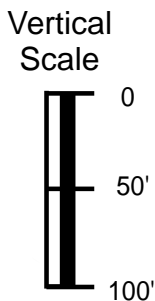
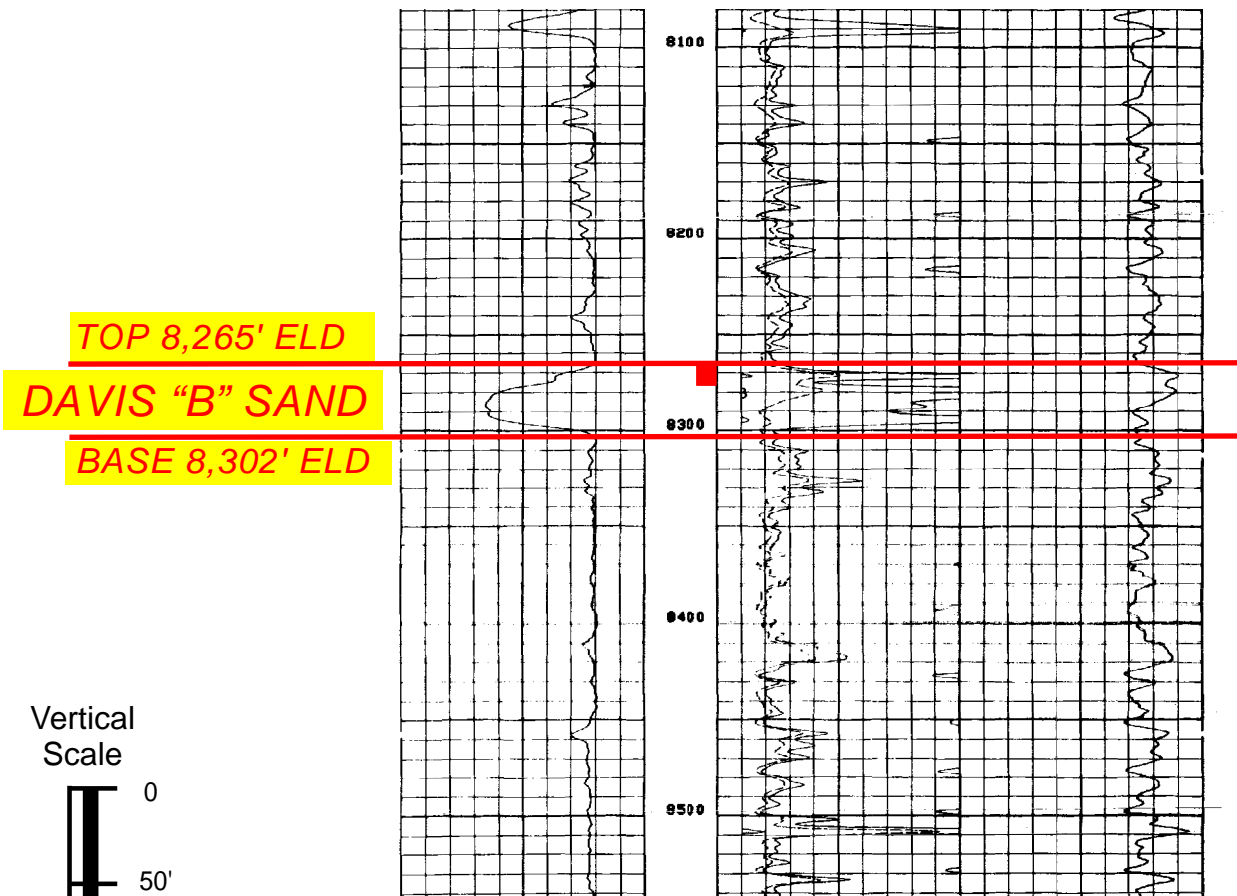
OFFICE WITH-
COMPLETION
ARTICLE 1).

[Signature]
 SIGNATURE
Southern Natural Gas Company
 OPERATOR
Area Production Superintendent
 TITLE

BRYAN GROVES
OIL & GAS GEOLOGIST
www.bryangrovesgeology.com

BRYAN GROVES
OIL & GAS GEOLOGIST
UNITIZATION / 3-D INTERPRETATION
www.bryangrovesgeology.com

1" LOG
 MAXIMUS OPERATING, LTD.
 (WILDHORSE)(SONAT)(EL PASO)
 Poland RC SUA; SNG Fee #2
 Sec. 13, T16N, R6W
 Serial No. 168780



SPUD: 6-5-80
 COMP. 7-10-80
 PERFS: 8266'-77'
 IP: FARO 220 MCFD, 0 BCPD,
 150 BWPD; ON 10/64" CK;
 FTP 700 PSIG; SITP 1800 PSIG
 RECOMP. 2-5-81 (POLAND SAND)
 PERFS: 7965'-73' & 7977'-8004'

EXHIBIT NO. 4
 DOCKET NO. 18-323 DATE: 6-26-18

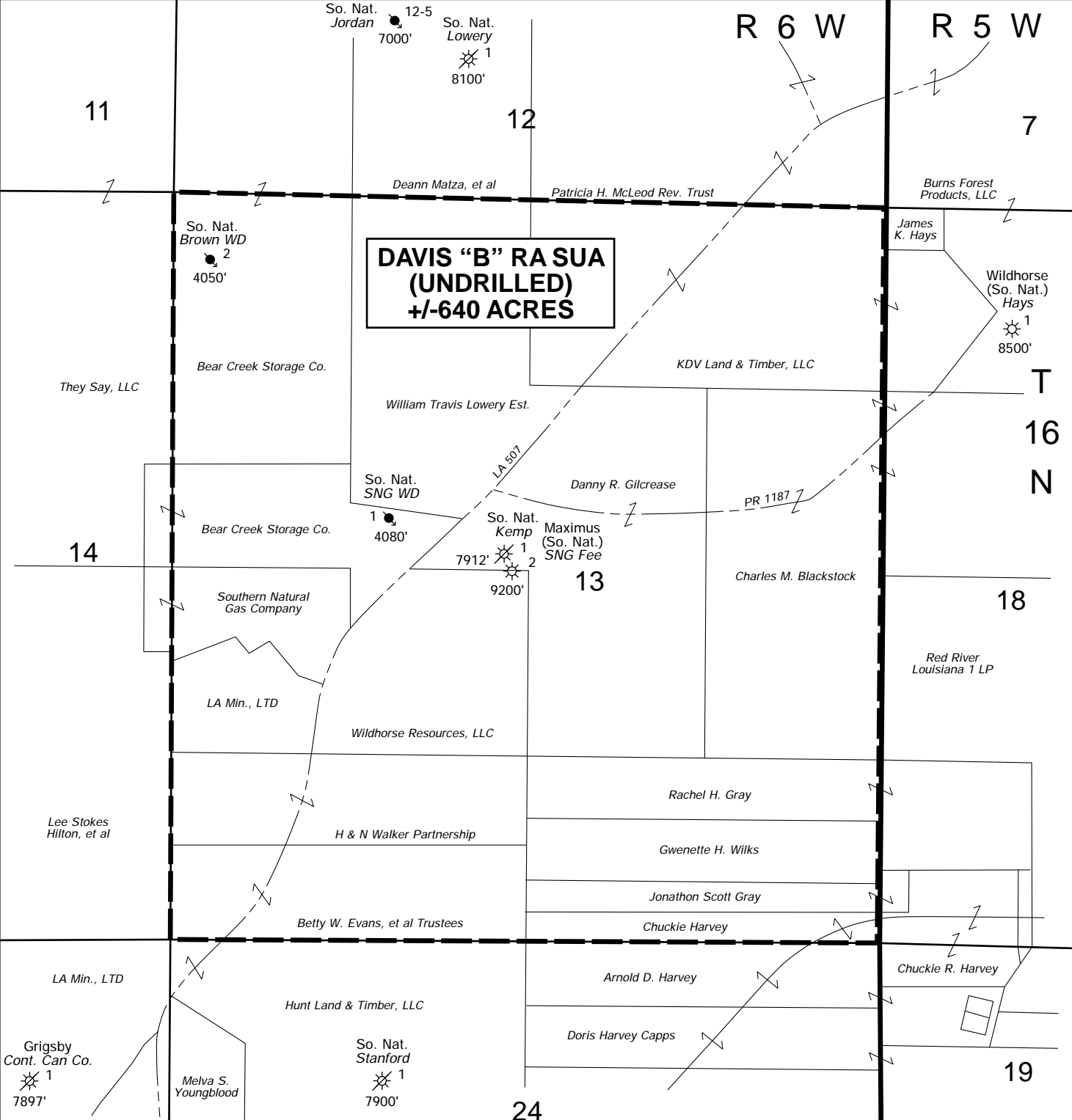
MAXIMUS OPERATING, LTD.

BEAR CREEK FIELD
 BIENVILLE PARISH, LOUISIANA

SAND DEFINITION LOG
Davis "B" Sand, Reservoir A

BRYAN GROVES
 OIL & GAS GEOLOGIST
 www.bryangrovesgeology.com

BRYAN GROVES
 OIL & GAS GEOLOGIST
 UNITIZATION / 3-D INTERPRETATION
 www.bryangrovesgeology.com

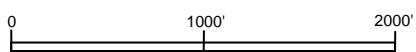


**DAVIS "B" RA SUA
(UNDRILLED)
+/-640 ACRES**

EXHIBIT NO. 5
DOCKET NO. 18-323
DATE: 6-26-18

MAXIMUS OPERATING, LTD.

BEAR CREEK FIELD
BIENVILLE PARISH, LOUISIANA
PROPOSED UNIT
DAVIS "B" SAND, RESERVOIR A



BRYAN GROVES
OIL & GAS GEOLOGIST
www.bryangrovesgeology.com

NOTE: ALL BOUNDARIES ARE GEOGRAPHIC

BRYAN GROVES
OIL & GAS GEOLOGIST
UNITIZATION / 3-D INTERPRETATION
www.bryangrovesgeology.com